



Barbie™

DREAMHOUSE™ CONSTRUCTABLES

This packet contains several fun, 3D buildable templates from a tiny Dreamhouse™ to a tiny birdhouse made for you and your dolls. You can even use some of these templates to store cute outfits and accessories for Barbie® and her friends. Place your finished templates in and around your Dreamhouse™ for decorating fun!

Structures works best when printed on a heavier sheet of paper made for your printer.
Do not use any type of adhesive that will leave marks or damage the existing Dreamhouse™ surfaces.

BARBIE™ TINY DREAMHOUSE™

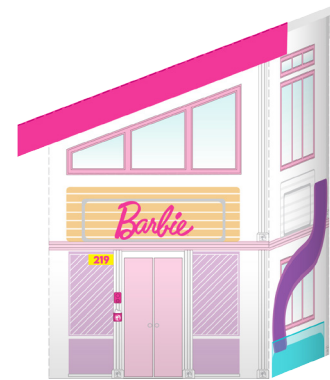
Barbie™

Barbie™ and her doll friends like to play too!
Place this miniature in your Dreamhouse for everyone to enjoy!

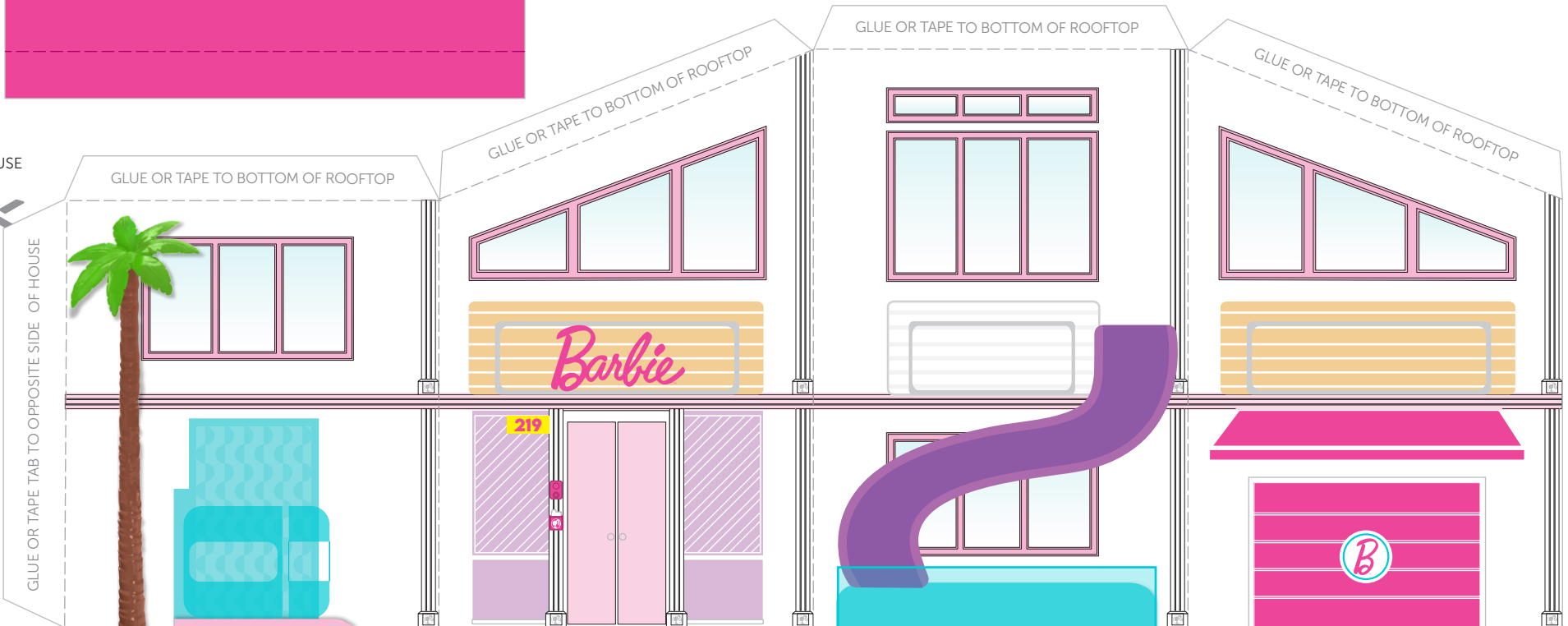
ROOFTOP



- STEP 1** Cut along solid lines
- STEP 2** Fold along dotted lines
- STEP 3** Fold in tabs
- STEP 4** Glue or tape house closed
- STEP 5** Position unprinted side of rooftop on top of house, between folds
- STEP 6** Glue or tape rooftop to house

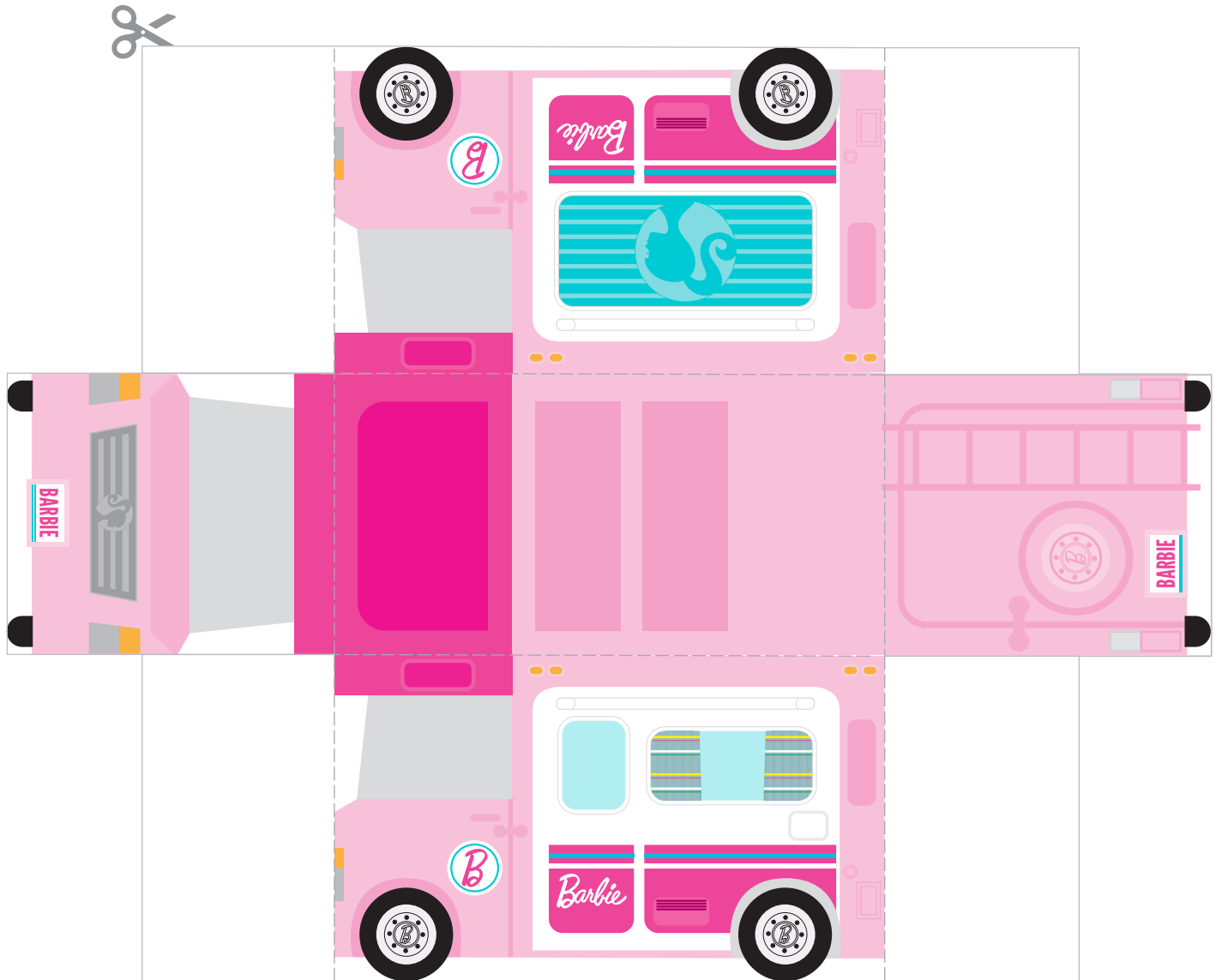


HOUSE



BARBIE™ TINY DREAMCAMPER

Imagine an epic road trip with Barbie™ and her doll friends.
Place this miniature in your Dreamhouse™ for everyone to enjoy!



STEP 1 Cut along all solid lines

STEP 2 Fold along dotted lines

STEP 3 Fold in tabs

STEP 4 Glue or tape to the inside of structure to create a box



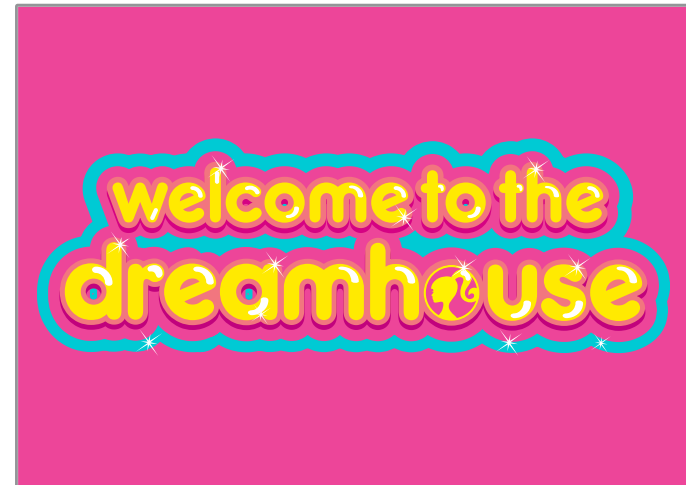
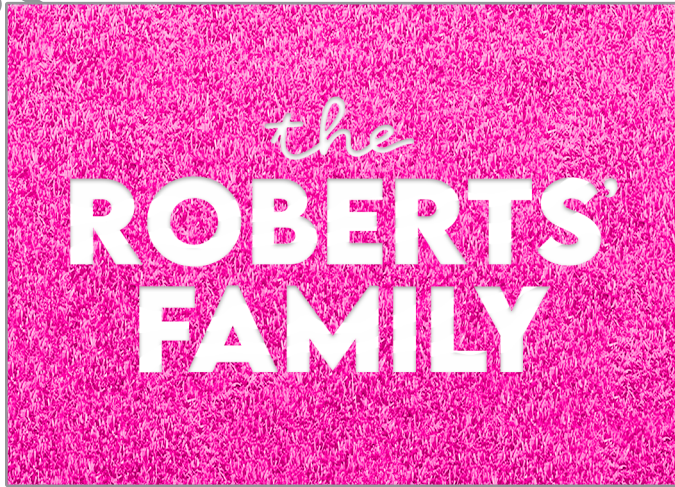
Structure works best when printed on a heavier sheet of paper made for your printer.
Inspired by the Barbie™ DreamCamper™. Not an exact replica.

Barbie

BARBIE™ DREAMHOUSE™ DOORMAT

Switch out your doormat with these fun options to welcome your dolls to the Dreamhouse.™

STEP 1 Cut along all solid lines



Structure works best when printed on a heavier sheet of paper made for your printer.

Barbie™

©2020 Mattel.

BARBIE™ DREAMHOUSE™ GIFT BOX

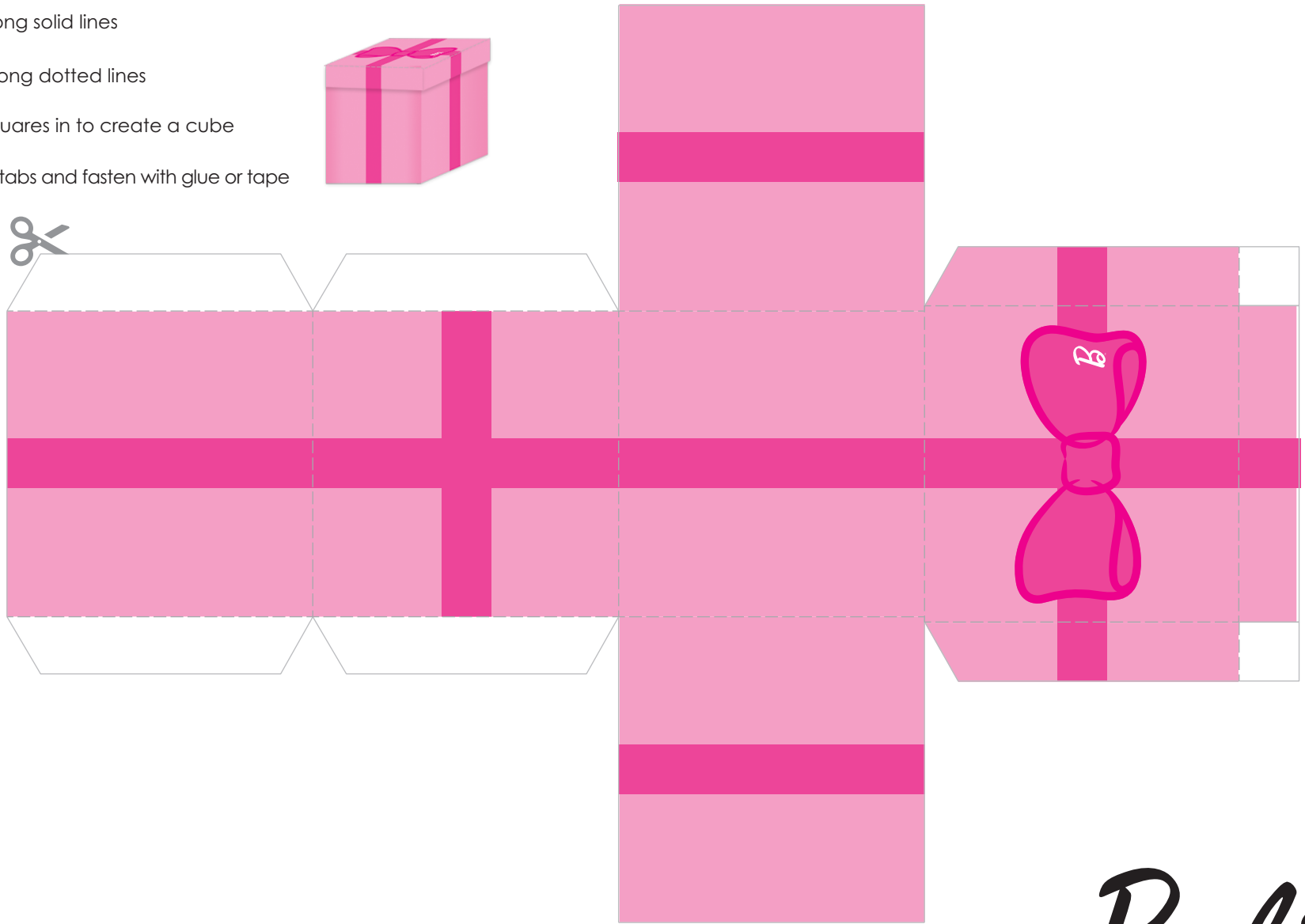
Barbie and her friends are hosting a party.
Pack this box full of surprises to share.

STEP 1 Cut along solid lines

STEP 2 Fold along dotted lines

STEP 3 Fold squares in to create a cube

STEP 4 Tuck in tabs and fasten with glue or tape



Structure works best when printed on a heavier sheet of paper made for your printer.

Barbie™

©2020 Mattel.

BARBIE™ DREAMHOUSE™ TOY BOX

Fill this box up with your doll's favorite things.

STEP 1 Cut along all solid lines

STEP 2 Fold along dotted lines

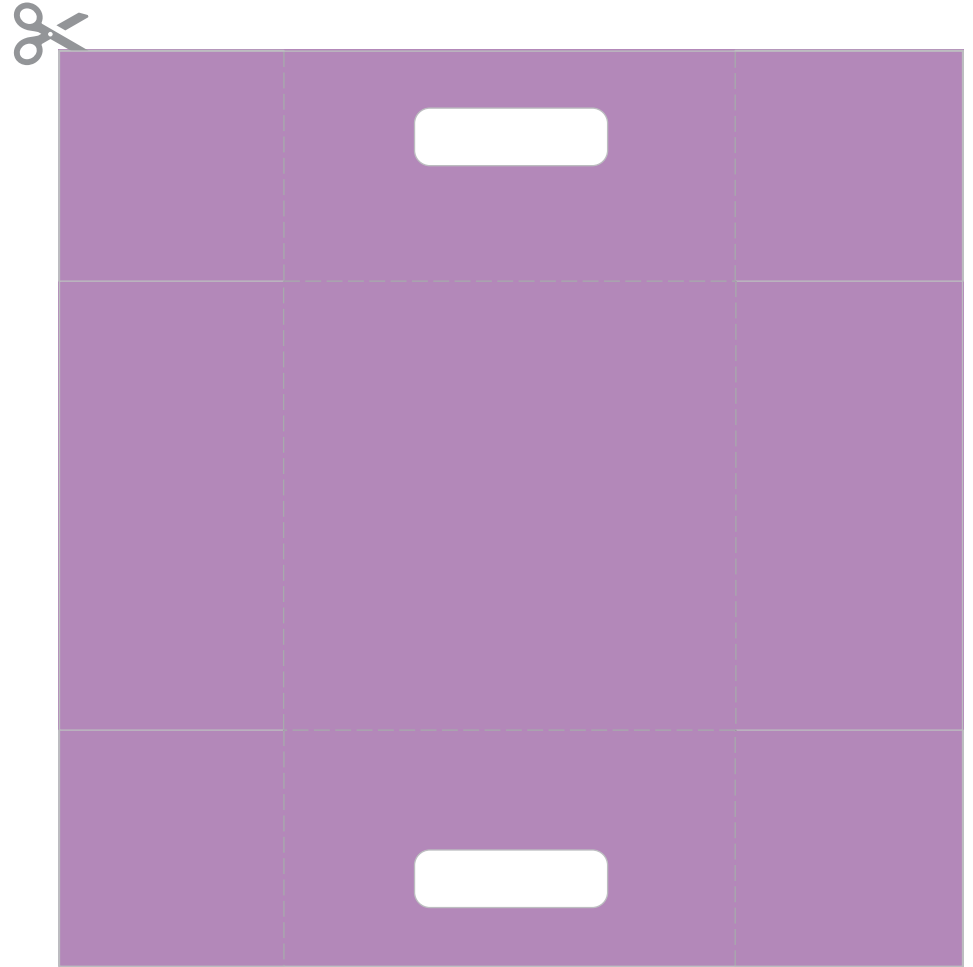
STEP 3 Fold in tabs

STEP 4 Glue or tape tabs to the inside of structure to create a box



BARBIE™ DREAMHOUSE™ ACCESSORY BINS

Place these fun storage bins around your Dreamhouse.™
Tape several cubes together to create a modular storage system.



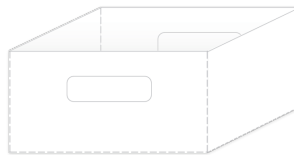
STEP 1 Cut along all solid lines

STEP 2 Cut out handles

STEP 3 Fold along dotted lines

STEP 4 Fold in tabs

STEP 5 Glue or tape tabs to the unprinted side of the structure to create a bin

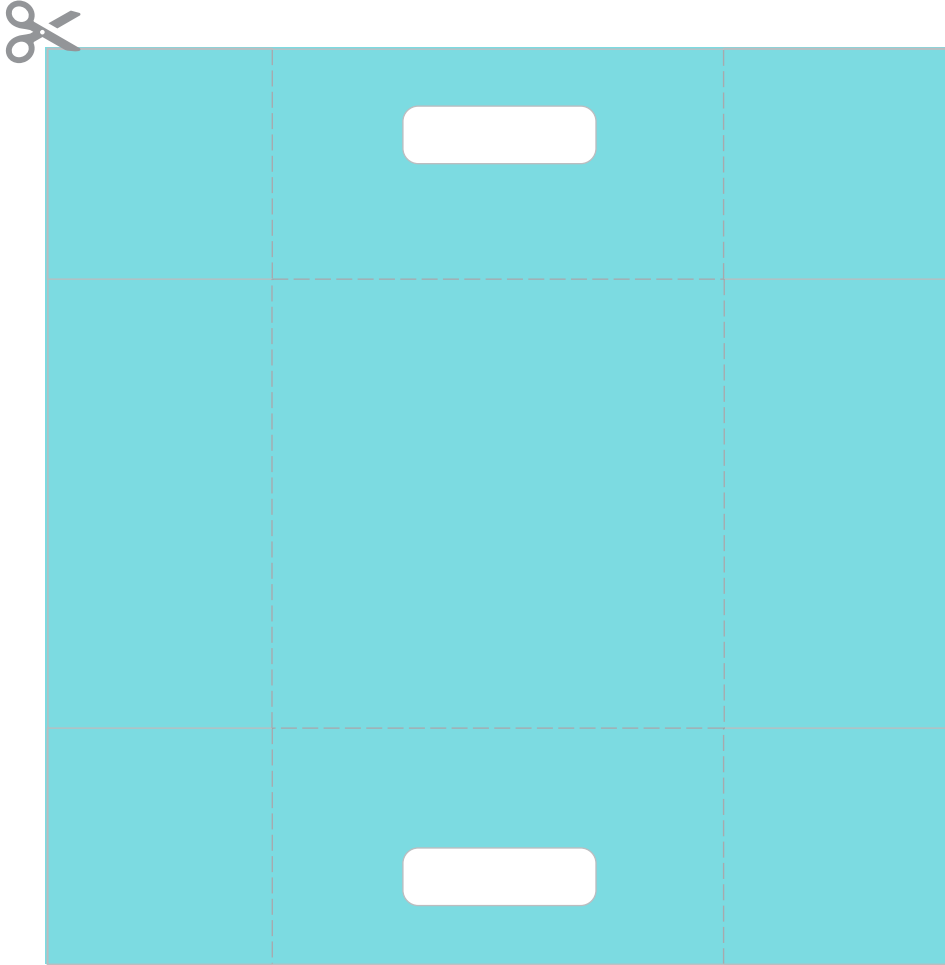


Structure works best when printed on a heavier sheet of paper made for your printer.

Barbie™

BARBIE™ DREAMHOUSE™ ACCESSORY BINS

Place these fun storage bins around your Dreamhouse.™
Tape several cubes together to create a modular storage system.



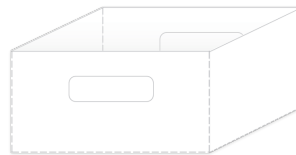
STEP 1 Cut along all solid lines

STEP 2 Cut out handles

STEP 3 Fold along dotted lines

STEP 4 Fold in tabs

STEP 5 Glue or tape tabs to the unprinted side of the structure to create a bin

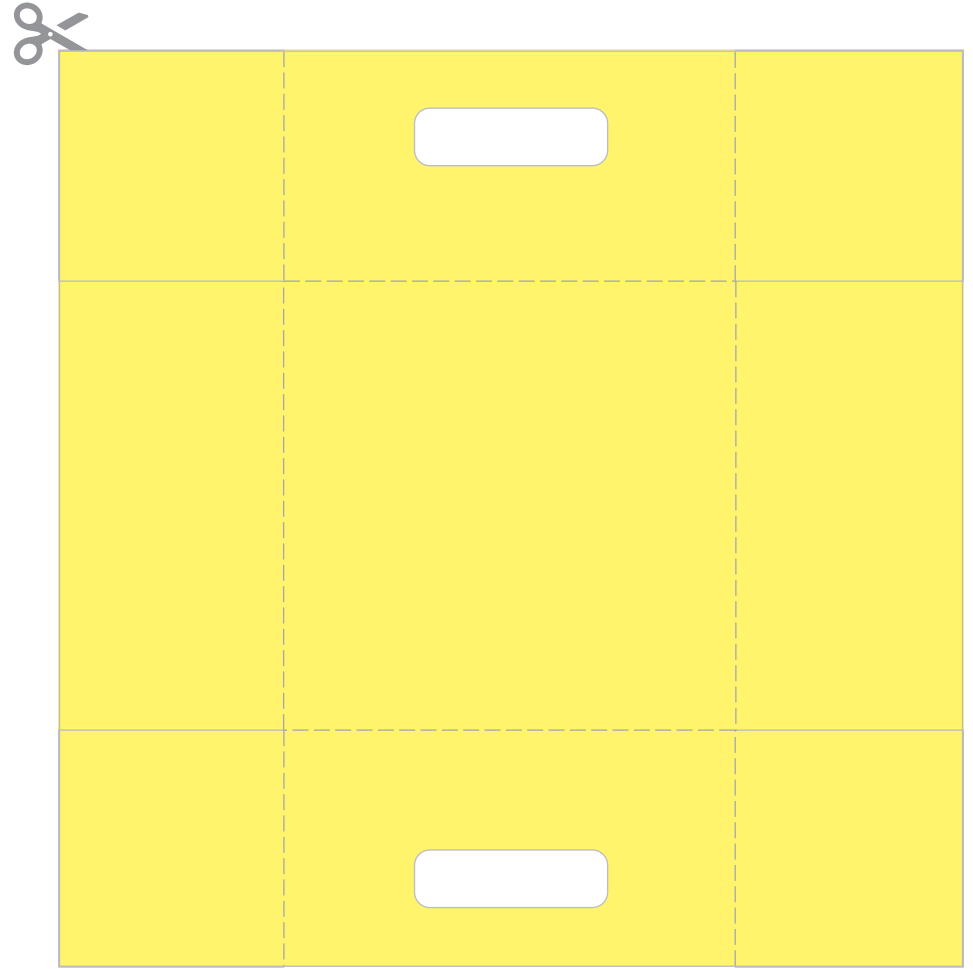


Structure works best when printed on a heavier sheet of paper made for your printer.

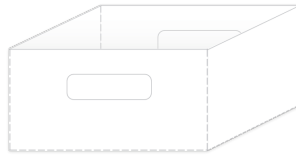
Barbie™

BARBIE™ DREAMHOUSE™ ACCESSORY BINS

Place these fun storage bins around your Dreamhouse.™
Tape several cubes together to create a modular storage system.



- STEP 1** Cut along all solid lines
- STEP 2** Cut out handles
- STEP 3** Fold along dotted lines
- STEP 4** Fold in tabs
- STEP 5** Glue or tape tabs to the unprinted side of the structure to create a bin

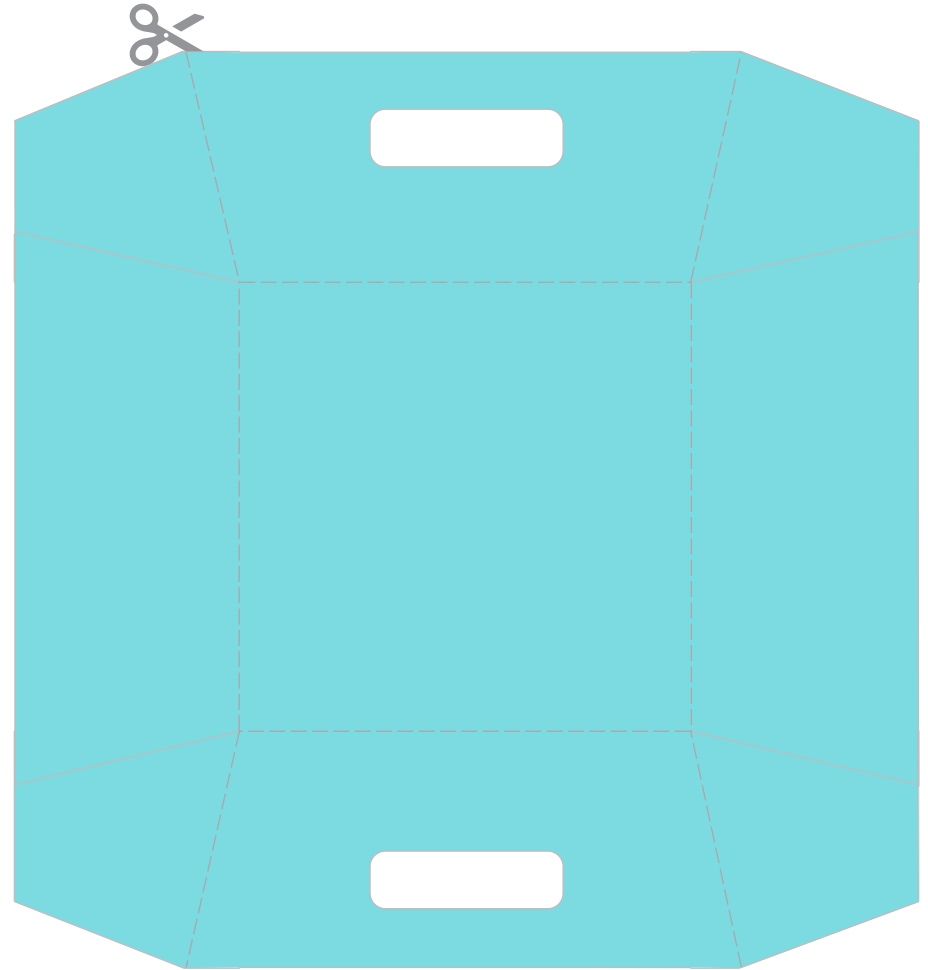


Structure works best when printed on a heavier sheet of paper made for your printer.

Barbie™

BARBIE™ DREAMHOUSE™ ACCESSORY BASKETS

Place these fun storage baskets around your Dreamhouse.™
Create several baskets if you need help organizing.



- STEP 1** Cut along all solid lines
- STEP 2** Cut out handles
- STEP 3** Fold along dotted lines
- STEP 4** Fold in tabs
- STEP 5** Glue or tape tabs to the unprinted side structure to create a basket

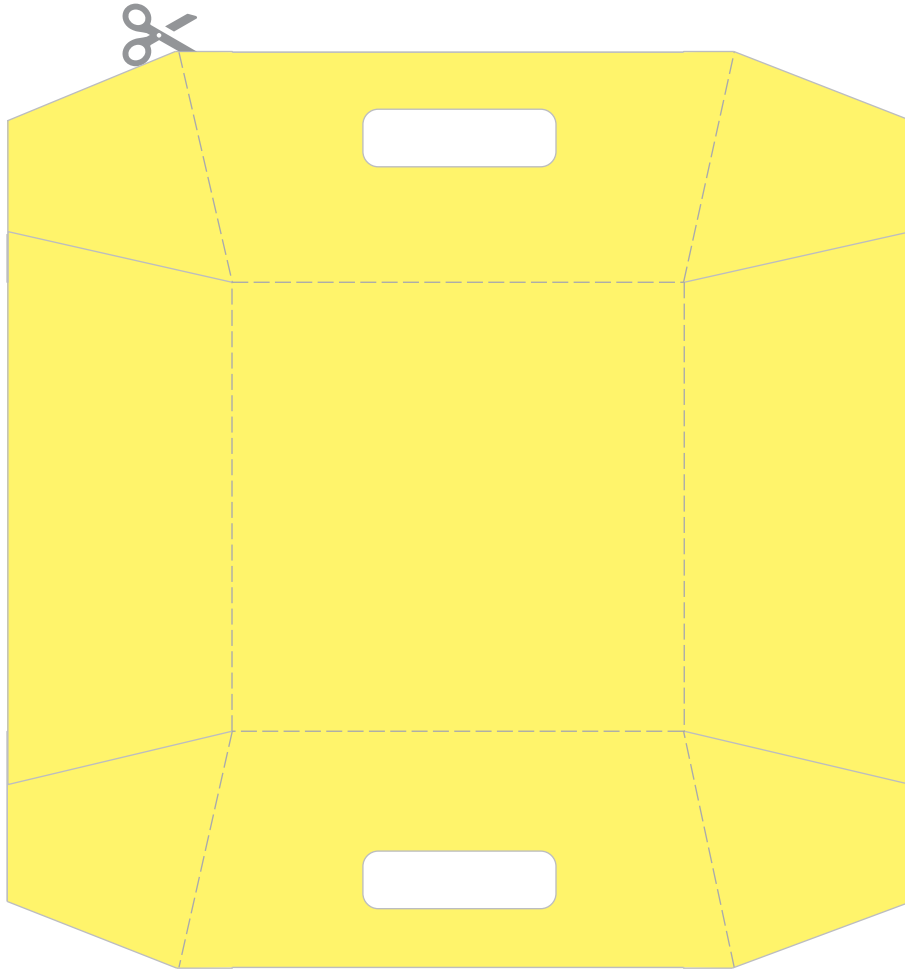


Structure works best when printed on a heavier sheet of paper made for your printer.

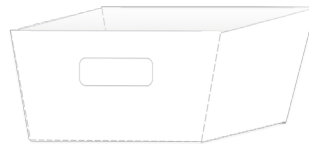
Barbie™

BARBIE™ DREAMHOUSE™ ACCESSORY BASKETS

Place these fun storage baskets around your Dreamhouse.™
Create several baskets if you need help organizing.



- STEP 1** Cut along all solid lines
- STEP 2** Cut out handles
- STEP 3** Fold along dotted lines
- STEP 4** Fold in tabs
- STEP 5** Glue or tape tabs to the unprinted side of the structure to create a basket

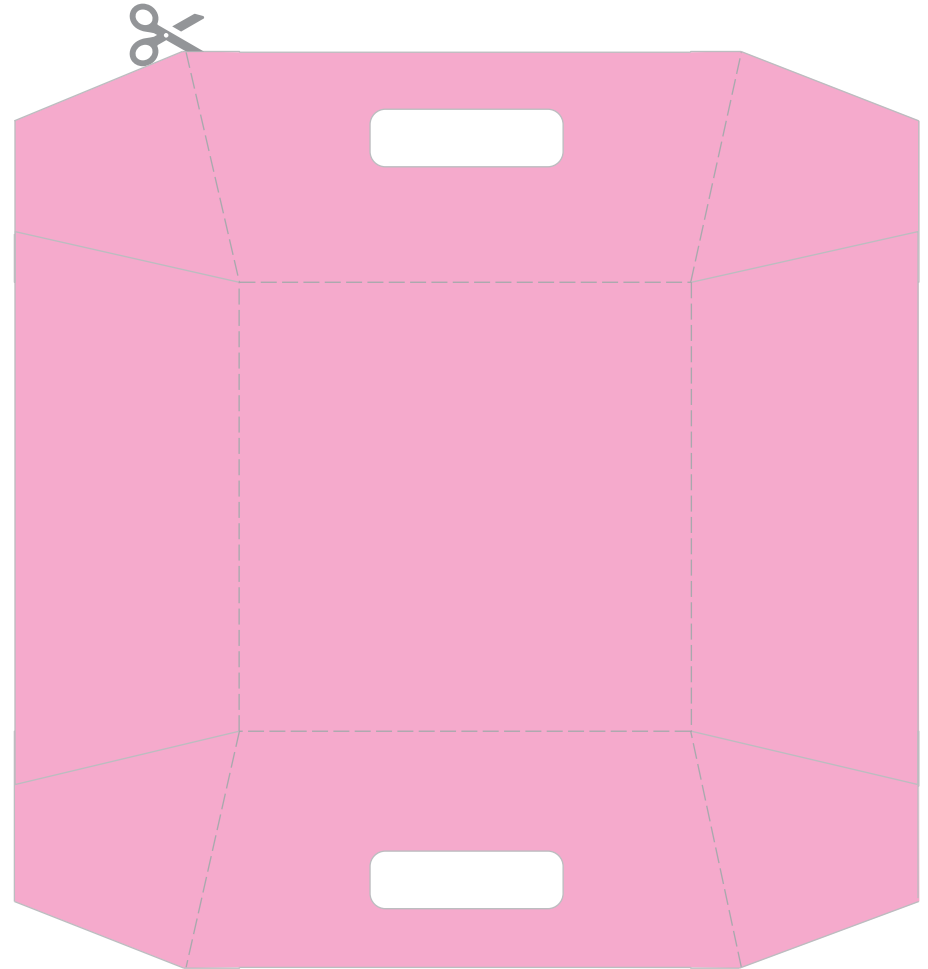


Structure works best when printed on a heavier sheet of paper made for your printer.

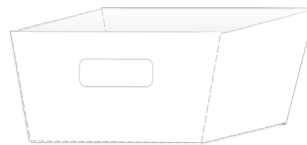
Barbie™

BARBIE™ DREAMHOUSE™ ACCESSORY BASKETS

Place these fun storage baskets around your Dreamhouse™.
Create several baskets if you need help organizing.



- STEP 1** Cut along all solid lines
- STEP 2** Cut out handles
- STEP 3** Fold along dotted lines
- STEP 4** Fold in tabs
- STEP 5** Glue or tape tabs to the unprinted side of the structure to create a basket



Structure works best when printed on a heavier sheet of paper made for your printer.

Barbie™

BARBIE™ DREAMHOUSE™ STACKABLE SHOE SHELF

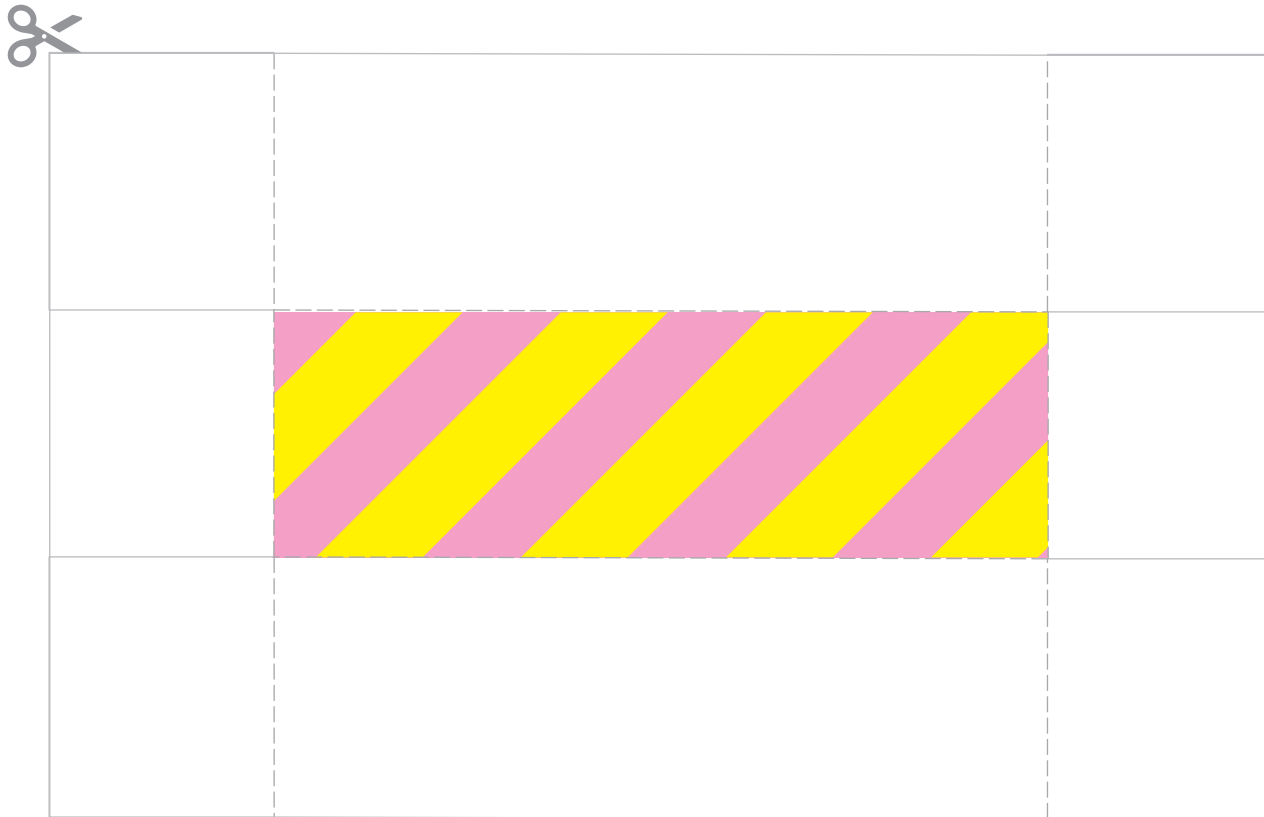
Keep your shoes in one place in your Dreamhouse.™
Tape these shelves together to create a stacked storage system.

STEP 1 Cut along solid lines

STEP 2 Fold along dotted lines

STEP 3 Fold in tabs

STEP 4 Affix tabs to the inside of the structure to create a box



Box can be flipped sideways to give you more fun options.

Structure works best when printed on a heavier sheet of paper made for your printer.

Barbie™

©2020 Mattel.

BARBIE™ DREAMHOUSE™ STACKABLE SHOE SHELF

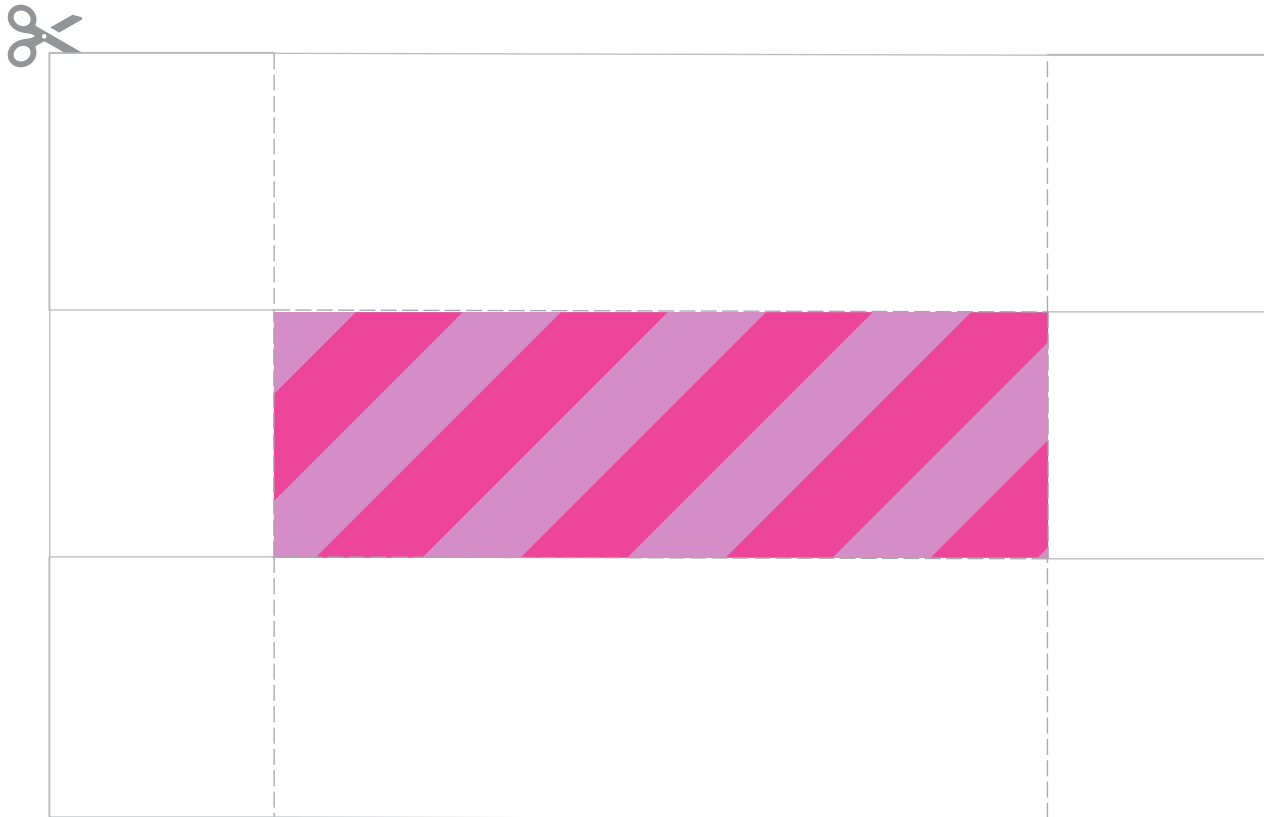
Keep your shoes in one place in your Dreamhouse.™
Tape several shelves together to create a modular storage system.

STEP 1 Cut along solid lines

STEP 2 Fold along dotted lines

STEP 3 Fold in tabs

STEP 4 Affix tabs to the inside of the structure to create a box



Box can be flipped sideways to give you more fun options.

Structure works best when printed on a heavier sheet of paper made for your printer.

Barbie™

©2020 Mattel.

BARBIE™ DREAMHOUSE™ STACKABLE SHOE SHELF

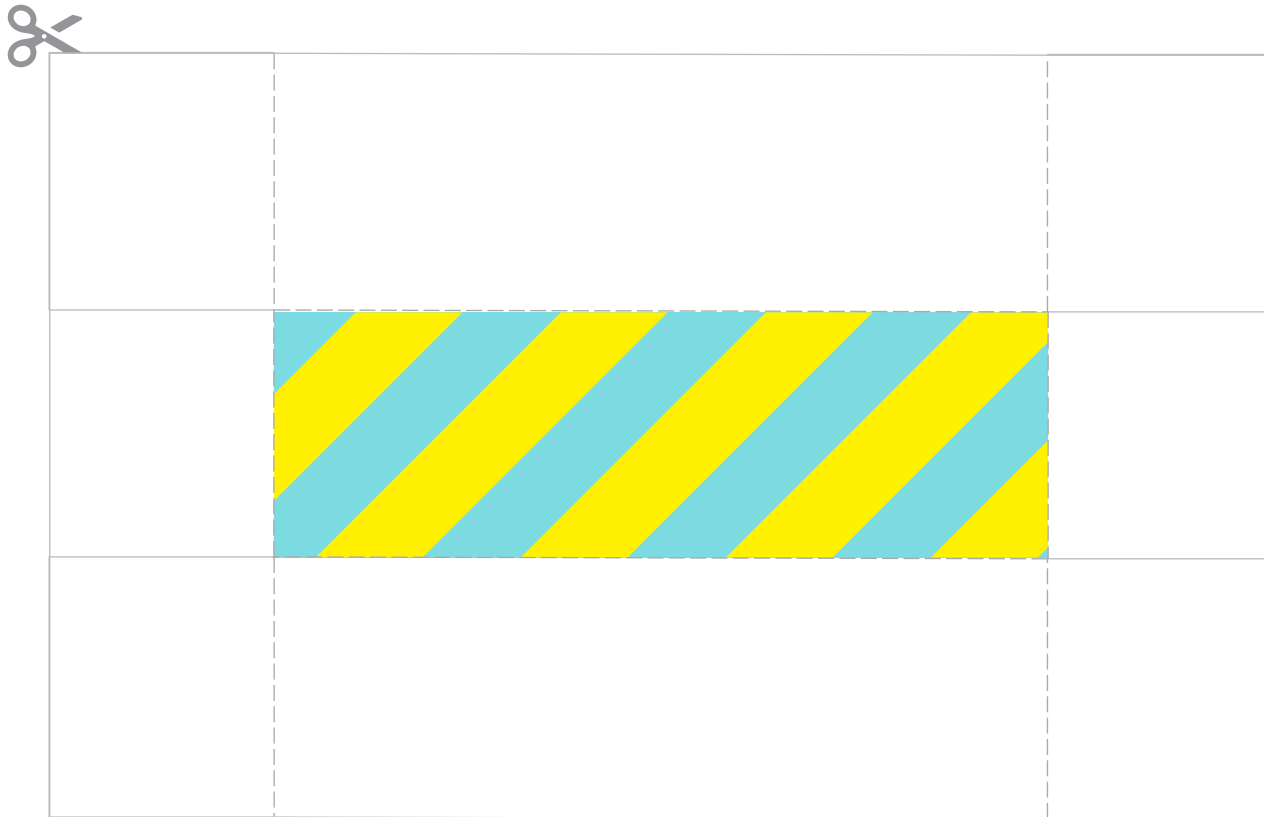
Keep your shoes in one place in your Dreamhouse.™
Tape several shelves together to create a modular storage system.

STEP 1 Cut along solid lines

STEP 2 Fold along dotted lines

STEP 3 Fold in tabs

STEP 4 Affix tabs to the inside of the structure to create a box



Box can be flipped sideways to give you more fun options.

Structure works best when printed on a heavier sheet of paper made for your printer.

Barbie™

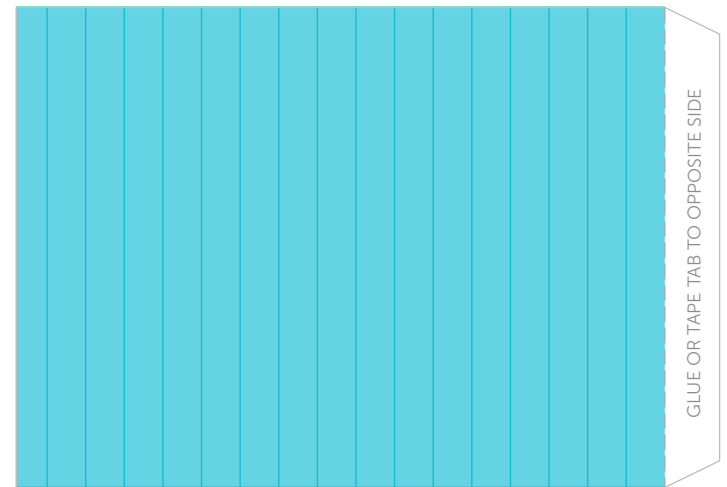
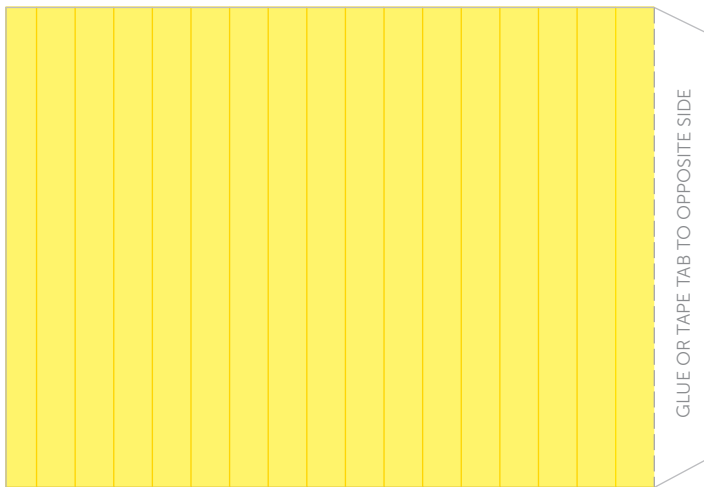
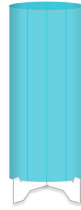
©2020 Mattel.

BARBIE™ DREAMHOUSE™ LAMPS

Brighten up your Dreamhouse™ with these modern cylinder lamps.

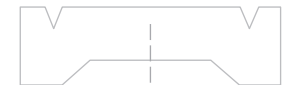
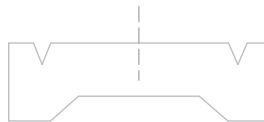
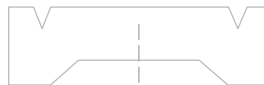
LAMP SHADE

- STEP 1** Cut along solid lines
- STEP 2** Fold tab along dotted line
- STEP 3** Glue or tape tab to opposite end of cutout to create a cylinder



LAMP BASE

- STEP 4** Cut along solid lines
- STEP 5** Make a partial cut following the dotted line, do not cut in half
- STEP 6** Combine the pieces at the slits to form an "X"



LAMP SHADE + LAMP BASE

- STEP 7** Place your cylinder on top of the base

Structure works best when printed on a heavier sheet of paper made for your printer.

Barbie

BARBIE™ DREAMHOUSE™ PICTURE FRAME

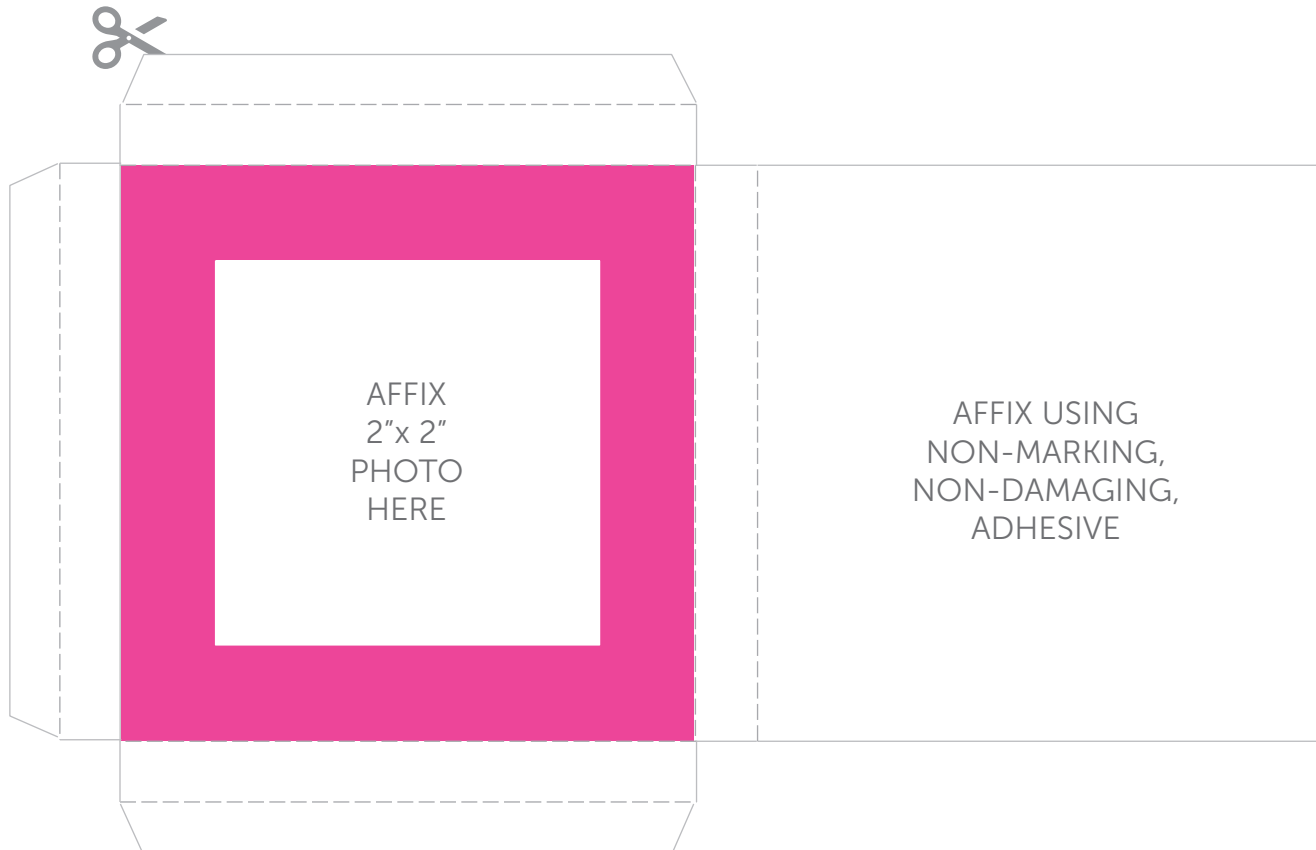
Hang a photo of you in the Dreamhouse.™
Change things up by moving it to different rooms.

STEP 1 Cut along solid lines

STEP 2 Fold along dotted lines

STEP 3 Fold in tabs

STEP 4 Glue or tape tabs to the back of the structure to create a box

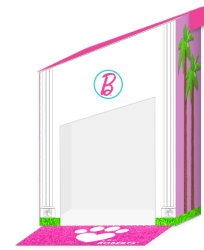


Structure works best when printed on a heavier sheet of paper made for your printer.
Do not use any type of adhesive that will leave marks or damage the existing Dreamhouse™ surfaces.

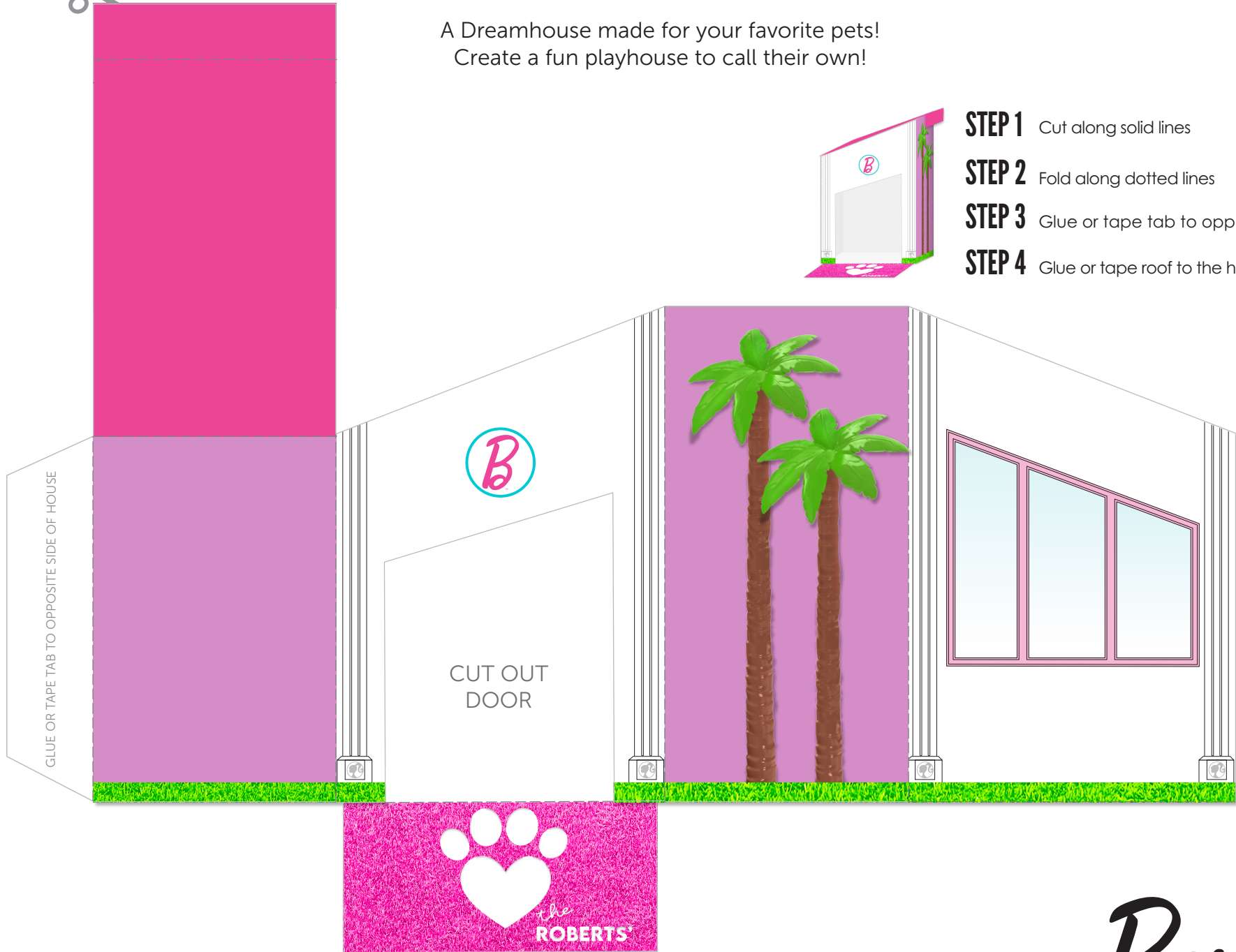
Barbie™

BARBIE™ PET DREAMHOUSE™

A Dreamhouse made for your favorite pets!
Create a fun playhouse to call their own!



- STEP 1** Cut along solid lines
- STEP 2** Fold along dotted lines
- STEP 3** Glue or tape tab to opposite side of house
- STEP 4** Glue or tape roof to the house



Structure works best when printed on a heavier sheet of paper made for your printer.
Inspired by the Barbie™ DreamHouse™. Not an exact replica.

Barbie™

©2020 Mattel.

BARBIE™ BIRDHOUSE

Welcome the neighborhood birds by hanging this outside the Dreamhouse.™

- STEP 1** Cut along all solid lines
- STEP 2** Fold along dotted lines
- STEP 3** Cut two slits on top of roof
- STEP 4** Loop a string around the slits so you can hang up the birdhouse
- STEP 5** Cut out the circular door on front if you want to create an entrance
- STEP 6** Fold in tabs
- STEP 7** Glue or tape tabs to the inside of the structure to create a box

